

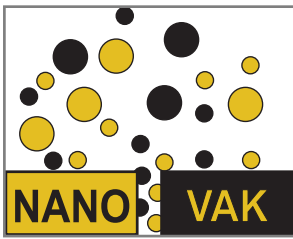
NANOVAK

NANOVAK® offers global products

NVBJ-300-2TH1SP Thermal Sputtering System



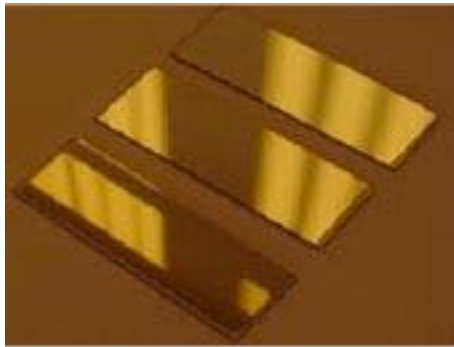
The Bell Jar type simple sputtering system can be used for day to day use. System has two box type evaporators and a single DC sputter gun on the base plate. System can be used to produce multilayered, metallic, oxide, fluoride, organic films, like SiO_2 , TiO_2 , Mo, ZrO_2 , TiN, Si_3N_4 , Au, Ag, Al, Ti, Cr and Ni. Features such as thickness/rate monitor and sample rotation are standard. A typical three layer thin film coating experiment cycle time is about 1.5 hour. For the loaded system the base Pressure is 5×10^{-7} Torr.



NANOVAK

NANOVAK® offers global products

Bell-Jar Thermal-Sputtering System



- Fully automated vacuum system with panel control, simple operation, 1 hour quick cycle time
- Cylindrical vacuum Bell-Jar made of Pyrex Glass, Standard 1" ports
- Various sample holders, 2", 3", 4" wafers, 1x3" lamellae, small sample spring holder, easy loading
- Ability to adjust sample source distance to save evaporation material
- Internal SS304 cylindrical protection jacket
- 5×10^{-7} Torr base pressure, 5×10^{-6} Torr vacuum level in 30 minutes
- Turbomolecular + Mechanical pump, SS316 flex hose and dust filter
- Wide range ($1000 - 10^{-9}$ Torr) vacuum control and measurement, auto vent and N_2 back-fill ability
- Closed cycle water cooler inside the desk, auto-on auto-off cooling system
- 2000 Watt (10V - 200A) AC power supply
- Two thermal evaporation sources, with proprietary box-source design for elimination of chamber and cross-source contamination
- One 2" DC Sputter gun, positioned on the base plate
- 600 VDC-3A 1U digital, switching power supply
- MFC controlled gas inputs, (Ar, N_2 , O_2) 3 channel real time digital control, 0.1 sccm sensitivity, gas mixing
- Throttle, vent and isolation valves, precise manual pressure setting between 1 - 100 mTorr
- Ability to do Argon and reactive gas sputtering
- Auto shut-off in case of power failure. Ability to keep the chamber in vacuum when not in use
- One common Servo controlled shutter for two thermal sources
- One touch start-stop vent button for automatic vacuum management
- 75x120 cm footprint, lockable wheels. Friendly interface and simple operation
- Easily passes through the standard 85 centimeter door
- One year full warranty for design, materials and workmanship